

**GT-TC208X-HXXX-LX**

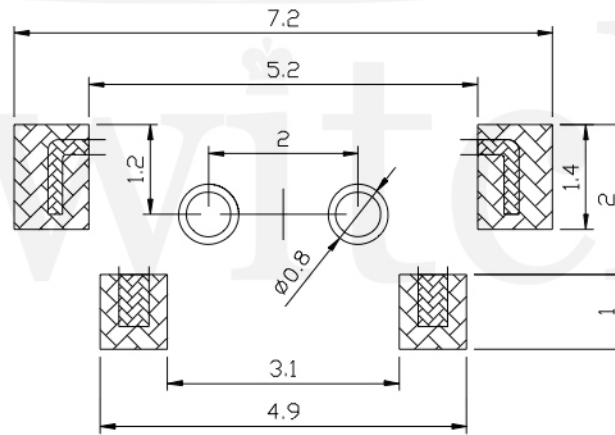
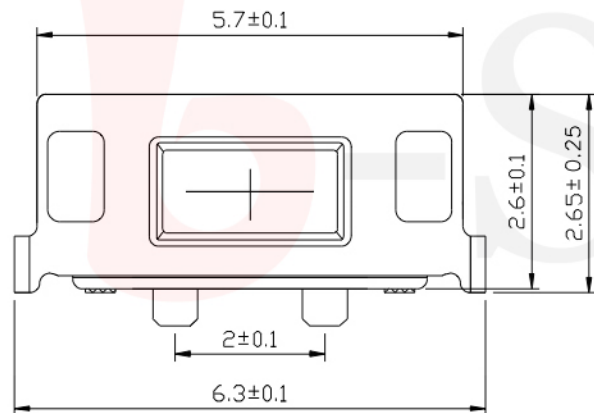
**G-SWITCH**



**Operating Force**  
A=160gf  
B=250gf  
C=130gf

**Switch Height (mm)**  
H035=3.5mm

**Switch lifetime (Force)**  
L05=50,000 Cycles(B)  
L1=100,000 Cycles(A, B, C)



**P.C.B LAND DIMENSION**

**G-Switch Specification:**

Operating temperature range : -30°Cto+85°C  
Rating : 50mA.12V DC  
Insulation resistance: : 100MΩ min.100V DC  
Dielectric strength : 250V AC for 1 min  
Contact resistance: : 100m Ω max.  
Travel:0.25±0.1mm



电路图



**G-Switch Electronic (HongKong) CO.,Ltd.**

Unless otherwise specified, Tolerance:  
X. ±0.30  
X.x ±0.20  
X.xx ±0.15  
X.xxx ±0.10  
Angles ±3°

DESIGN 陈锋枫 DATE 2019.05.29  
CHECKED DATE  
APPROVED DATE  
<http://www.dg-switch.com>  
TEL:0769-82388879

Molde code:  
**GT-TC208X-HXXX-LX**  
REV.: X1 SCALE: 4:1 UNIT: mm  
SIZE: A4 SHEET: 1/1