

RECOMMENDED P.C.B. LAYOUT (T:1.00mm)
TOLERANCE UNSPECIFIED ±0.05mm
SCALE: 1:1

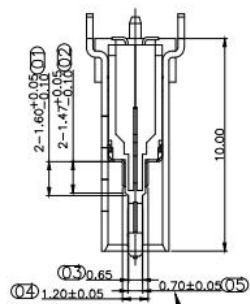
Pin	Signal Name	Description	Pin	Signal Name	Description
A1	GND	Ground return	B12	GND	Ground return
A4	Vcc	Bus Power	B9	Vcc	Bus Power
A5	CC1	Configuration Channel	B8	SRM2	Sideband Use (SBE)
A6	Dp1	Positive half of the USB 2.0 differential pair-Position 1	B7	Dm2	Negative half of the USB 2.0 differential pair-Position 2
A7	Dn1	Negative half of the USB 2.0 differential pair-Position 1	B6	Dp2	Positive half of the USB 2.0 differential pair-Position 2
A8	SRM1	Sideband Use (SBE)	B5	CC2	Configuration Channel
A9	Vcc	Bus Power	B4	Vcc	Bus Power
A12	GND	Ground return	B1	GND	Ground return

- 备注:
- 1, 材质: 外壳: SUS304 1/2H T=0.30±0.01mm;
护套: SUS316L 140-160 T=0.10±0.01mm;
端子: C7025 T=0.12±0.01mm;
胶芯: 热塑性塑胶LCP, 黑色。
中夹片: SUS304 H T=0.15±0.01mm;
 - 2, 电镀: 外壳: 全表面镀镍100u" Min.
端子: 镍底80~100u", 镀雾锡100~120u" Min.
 - 3, 外观不允许有压伤, 脏污, 模痕, 错位等现象;
 - 4, 盐雾测试需过24H以上;
 - 5, 连接处错位0.03mmMax, 不能有变形;
 - 6, 有"CPK"标志的需做制程稳定控制;
 - 7, 有" "标志的尺寸为QIP检验尺寸;
 - 8, 有" "标志的尺寸为FAI检验尺寸;
 - 9, 产品符合USB 协会标准。

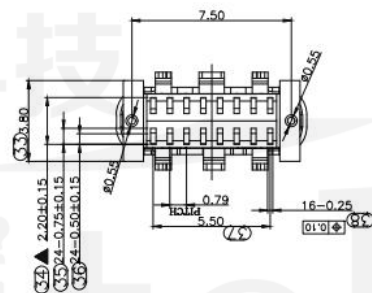
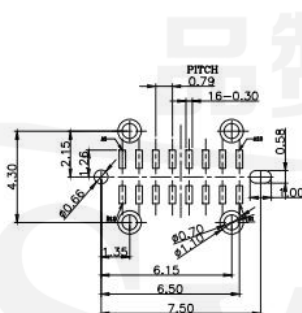
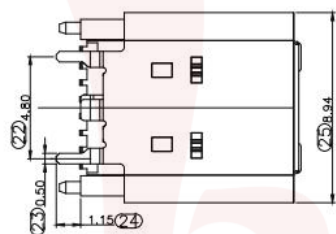
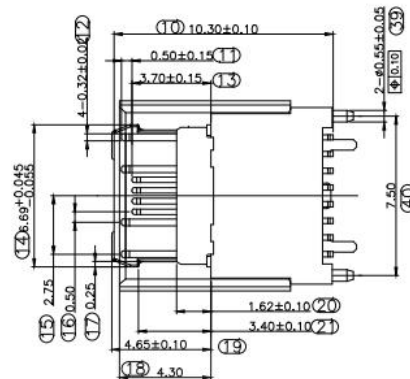
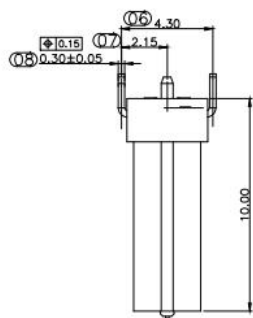


G-Switch Electronic (HongKong) CO.,Ltd.

Unless otherwise specified, Tolerance: X. ±0.30 X.x ±0.20 X.xx ±0.15 X.xxx ±0.10 Angles ±3'	DESIGN FengFengChen	DATE 2019.05.29	Molde code:	
	CHECKED	DATE	GT-USB-7051A	
APPROVED	DATE	REV.: X1 SCALE: 4:1 UNIT: mm		
http://www.dg-switch.com		SIZE: A4 SHEET: 1/1		
TEL:0769-82388879				

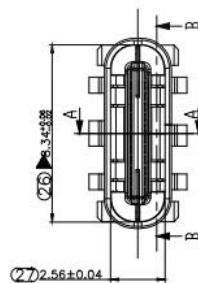
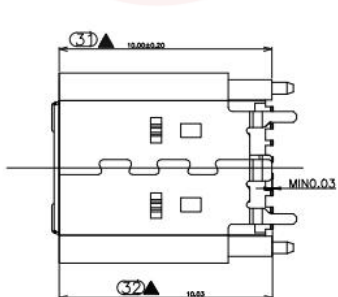


舌片厚度



备注:

- 1, 材质: 外壳: SUS304 1/2H T=0.30 \pm 0.01mm;
护套: SUS316L 140~160 T=0.10 \pm 0.01mm;
端子: C7025 T=0.12 \pm 0.01mm;
胶芯: 热塑性塑胶 LCP, 黑色。
中夹片: SUS304 H T=0.15 \pm 0.01mm;
- 2, 电镀: 外壳: 全表面镀镍100u" Min.
端子: 镍底80~100u", 镀雾锡100~120u" Min.
- 3, 外观不允许有压伤, 脏污, 模痕, 错位等现象;
- 4, 盐雾测试需过24H以上;
- 5, 连接处错位0.03mmMax, 不能有变形;
- 6, 有"CPK"标志的需做制程稳定控制;
- 7, 有" "标志的尺寸为QIP检验尺寸;
- 8, 有" "标志的尺寸为FAI检验尺寸;
- 9, 产品符合USB 协会标准。



Signal Name	Description	Signal Name	Description
	Ground return		Ground return
Yes	Bus Power	Yes	Bus Power
CC1	Configuration Channel	SR12	Sidband Tse (SR)
Dp1	Positive half of the USB 2.0 differential pair-Position 1	Dn2	USB 2.0 differential pair-Position 2
Dn1	Negative half of the USB 2.0 differential pair-Position 1	Dp2	USB 2.0 differential pair-Position 2
SR11	Sidband Tse (SR)	BS	CC2 Configuration Channel
Yes	Bus Power	Yes	Bus Power
GN1	Ground return	GN2	Ground return



G-Switch Electronic (HongKong) CO.,Ltd.

Unless otherwise specified, Tolerance:
X. ± 0.30
X.x ± 0.20
X.xx ± 0.15
X.xxx ± 0.10
Angles $\pm 3'$

DESIGN FengFengChen DATE 2019.05.29
CHECKED DATE
APPROVED DATE
<http://www.dg-switch.com>
TEL:0769-82388879

Molde code:
GT-USB-7051B
REV.: X1 SCALE: 4:1 UNIT: mm
SIZE: A4 SHEET: 1/1

