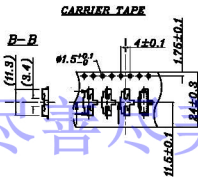
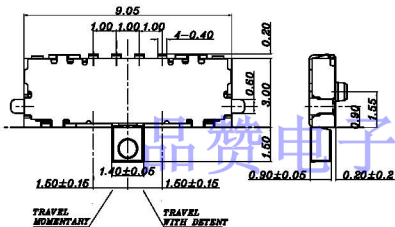


**CIRCUIT DIAGRAM
SEE DIRECTION**

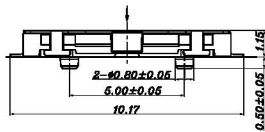
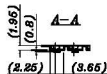


CARRIER TAPE

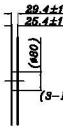
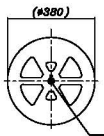
MK-14C03R-G015

侧拨形式
品质系列编码

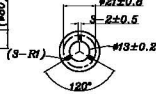
G015=1.5mm



REEL



DETAIL OF A



COVER TAPE



G-Switch:

使用温度范围: -20~70℃
耐压: AC250V 50Hz 1min
额定负荷: DC 12V 0.5A
操作力: 200g±100gf
接触电阻: ≤0.05Ω
动作寿命: 10000次
绝缘电阻: ≥100MΩ



**RoHS
Compliant
2002/95/EC**



G-Switch Electronic (HongKong) CO.,Ltd.

Unless otherwise specified, Tolerances:
X. ±0.30
X.x ±0.20
X.xx ±0.15
X.xxx ±0.10
Angles ±3°

DESIGN 陈伟祺 DATE 2016.05.29
CHECKED DATE
APPROVED DATE
<http://www.dg-switch.com>
TEL: 0769-82388879

TITLE: **MK-14C03R-G015**
REV.: X1 SCALE: 4:1 UNIT: mm
SIZE: A4 SHEET: 1/1